



Environmental Information System - Resource Partner

(Ministry of Environment, Forest and Climate Change, Govt. of India)

Indian Institute of Tropical Meteorology, Pune



Part II
Artistic outlook towards Environment and COVID-19

Art Book

IITM-ENVIS



Editorial

The human species has exceptional high intelligence and expresses its thoughts & experiences through various art forms. A true art comes to birth when synchronization of conscious and subconscious mind happen and hence it has great potential to make people realize and aware to work on environmental issues.

IITM-ENVIS had conducted a drawing competition on the occasion of “World Environment Day 2020”. The competition got tremendous response from all over India and school children, college students have participated with exceptional drawing. This art book is compilation those exceptional drawings and few illustrations showing impact of Climate Change.

This art book will create interest and enthusiasm among the children, schools, teachers and artist to take steps towards changing climate.

Prof. (Dr.) Gufran Beig
ENVIS-IITM, Pune



Compilation by,

Samir Dhapare (Program Officer)

Gaurav Shinde (Information Officer)

Bhagyashri Katre (I.T. Officer)

Darshana Jadhav (DEO)

Note : The pictures in this book may be subject to copyright and can not be reprinted without permission



"Stop pollution, be quick; Don't make the earth sick..."

-Drawing by Gayatri Vilas Patil



"Pollution from human activities is changing the Earth's climate. We see the damage that a disrupted climate can do: on our coasts, our farms, forests, mountains, and cities. Those impacts will grow more severe unless we start reducing global warming pollution now"

-Drawing by Riddhi Agrawal and Sanjeev



"Burning fossil fuels releases gases and chemicals into the air..."

—Drawing by Akaṅkṣha Kumari



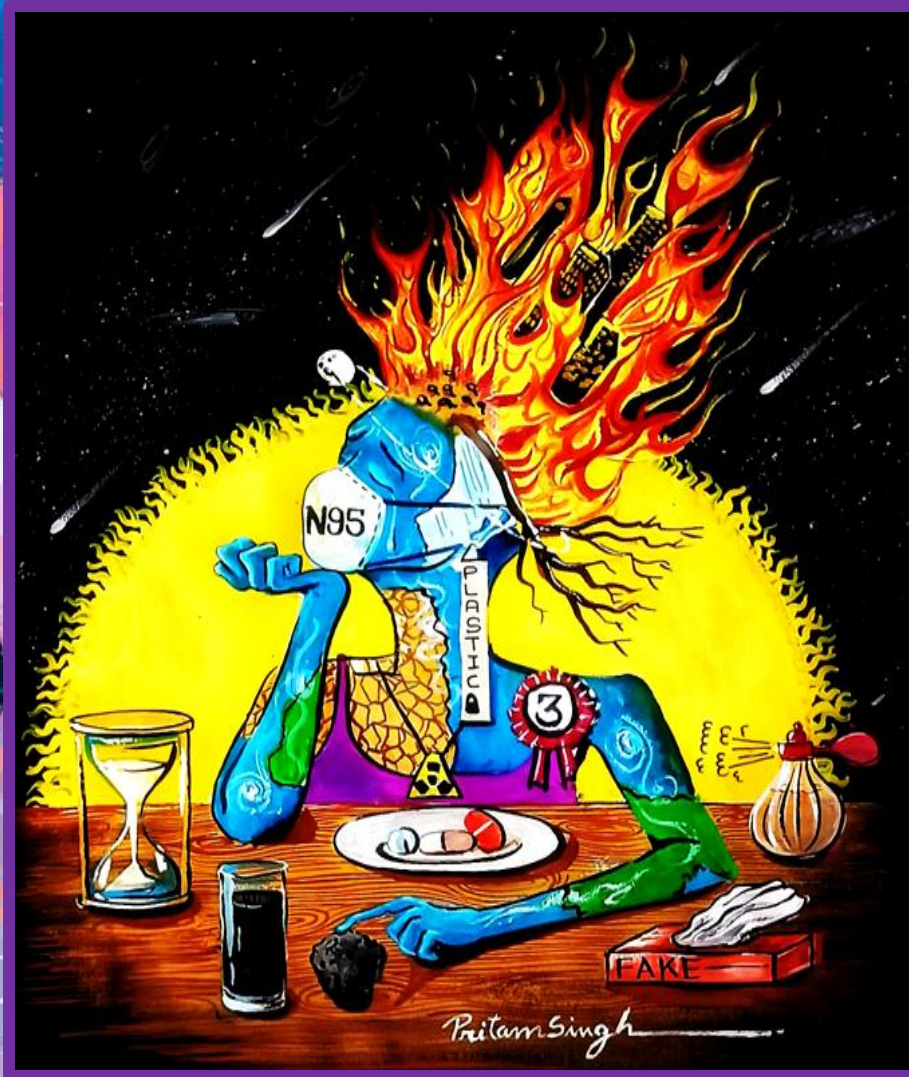
"The issue of pollution has become a blasting fuse for social instability"

-Drawing by Bala Krishna

"The only solution to pollution is a people's humane revolution!"

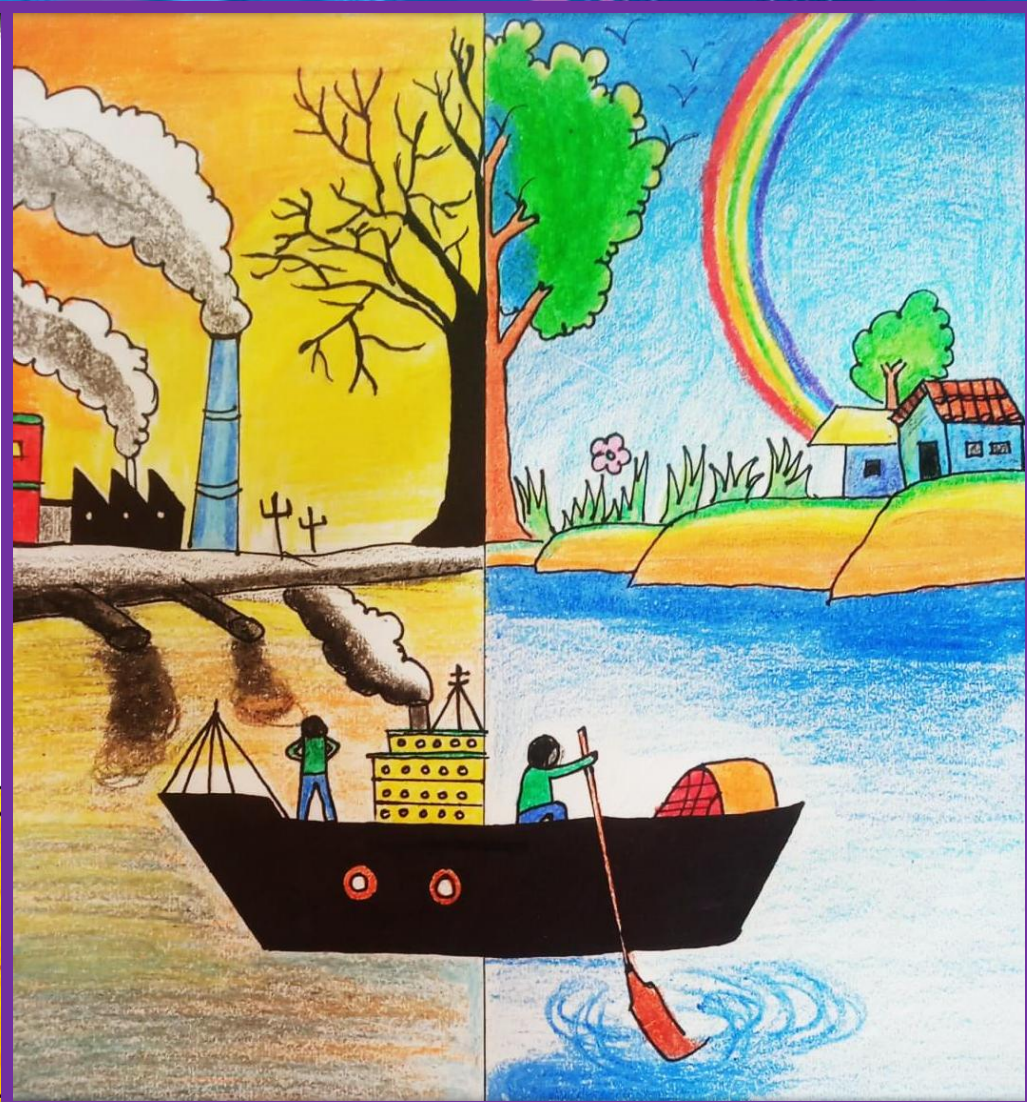
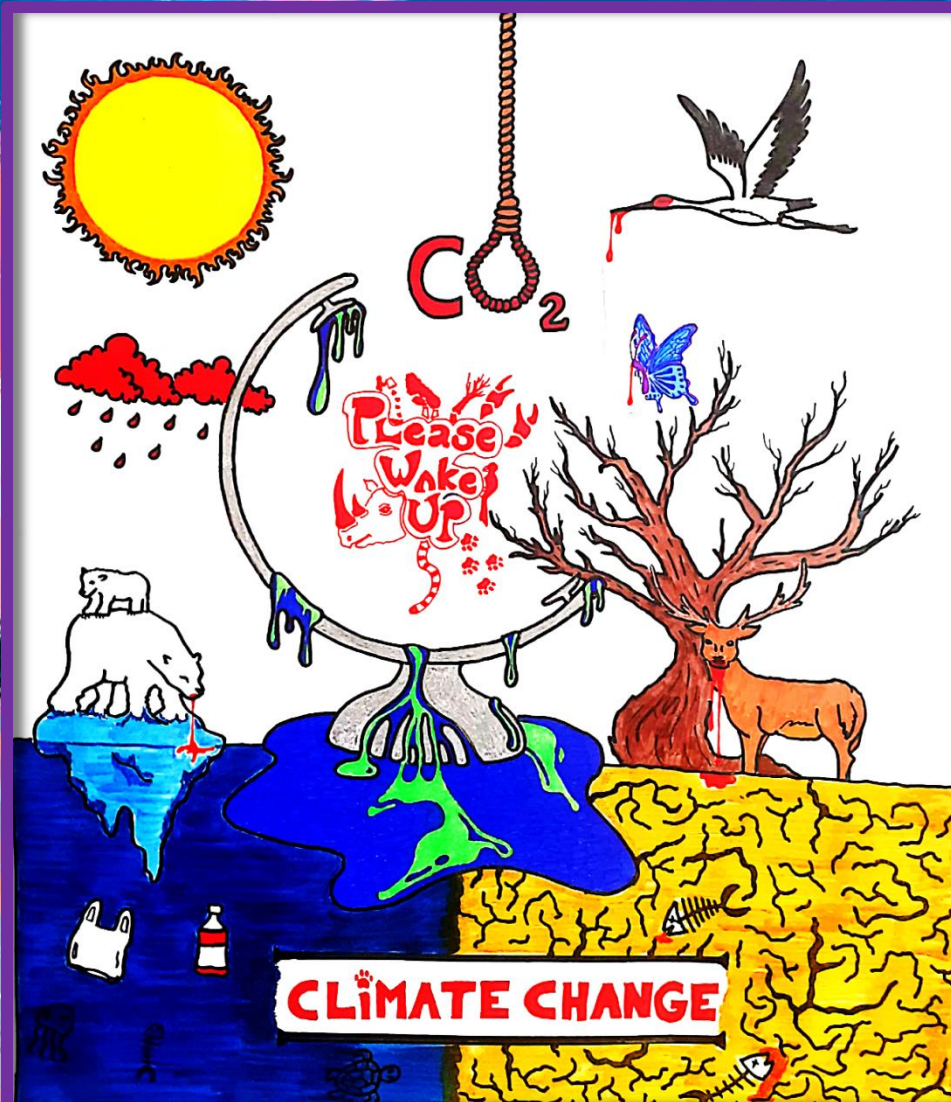
-Drawing by Krishna Manish





"The fossil fuel industry for too long has shifted enormous costs of carbon pollution onto the public"

-Drawing by Pritam Singh and Ritishnata Nayak



"Pollution is nothing but the resources we are not harvesting. The value of life will suffer a dilution If you do not fight air pollution"

-Drawing by F Abdulla and Pankti Shah



Proxies for the Past is inspired by the universal unknowns, which humans try to solve by using materials such as ice cores, tree rings, and lichens to date past climate events. Nature reveals some of its' secrets in these concentric forms, allowing us to determine information such as the data depicted: the average global temperature of Earth from 11,000 years ago to present. Thus, natural materials help us to understand a small portion of Earth's history.

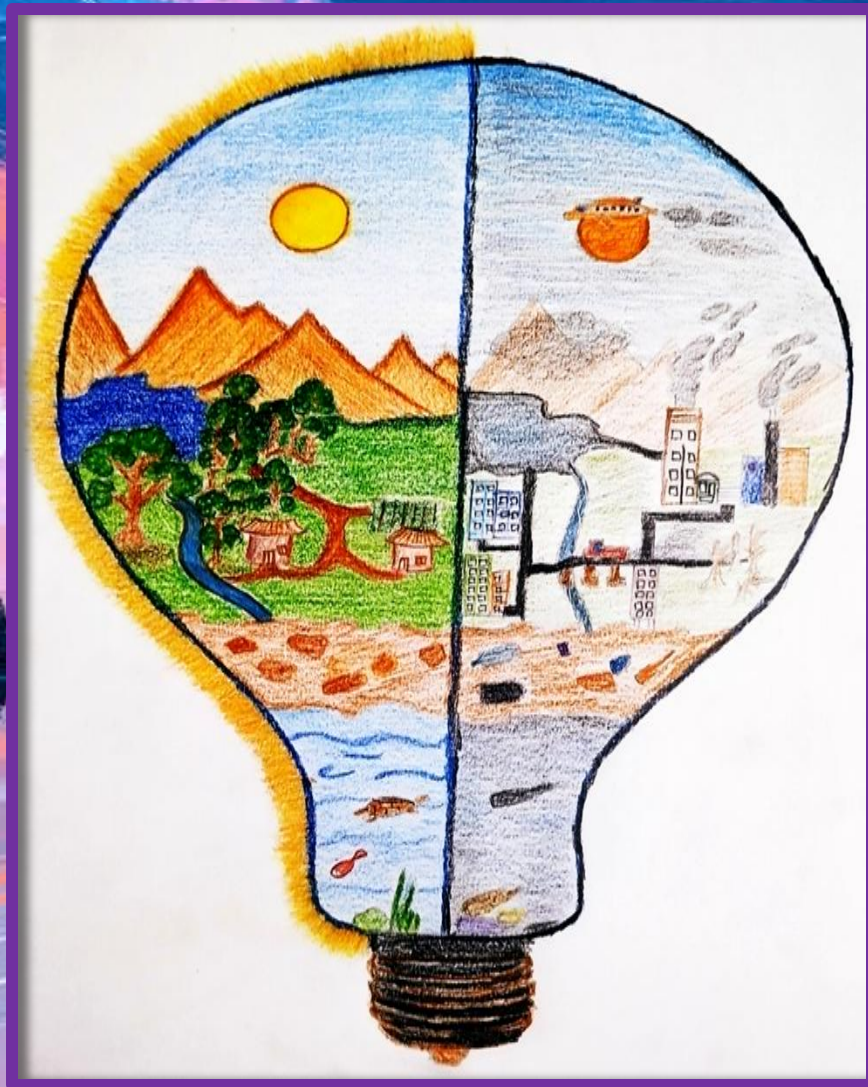
Reference:

<https://www.climate.gov/news-features/climate-qa/what%E2%80%99s-hottest-earth-has-been-%E2%80%9Cclatefy%E2%80%9D>

<http://www.jillpelto.com/gallery>



"The environment will continue to deteriorate until pollution practices are abandoned..."
-Drawing by Dhruvi Prafulkumar Kotadiya



"Environmental Pollution is a ladder to destruction of nature..."

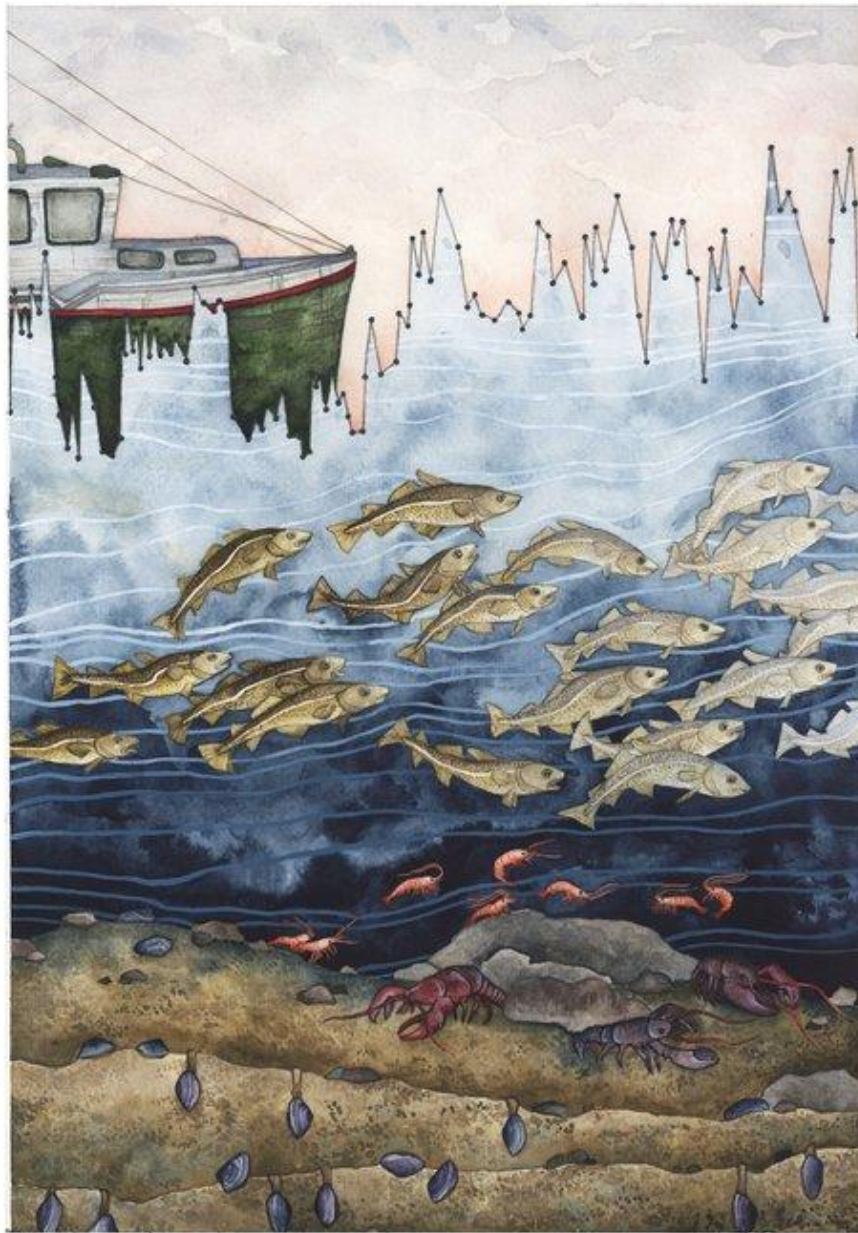
-Drawing by Kathiriya Rushil Ashokbhai and Ria Barve



“The earth, the air, the land and the water are not an inheritance from our fore fathers but on loan from our children. So we have to handover to them at least as it was handed over to us...”

-Drawing by Jayanta Subhash Tiple

-Drawing by Jayanta Subhash Tiple



Gulf of Maine Temperature Variability tells the story of increasing temperature fluctuations in Maine's coastal marine environment.

The watercolor uses ocean temperature data from the past 15 years to highlight how greater variability affects various species including ourselves. The piece also highlights the inattention to the coupled relationship between human action and environmental responses that has contributed to depleted fish stocks and increased ocean acidification.

This Gulf of Maine story spans the water column: from the burrowing clams and bottom-dwelling lobster and shrimp, to the overfished cod which disappear across the painting as they struggle to return to a changing habitat, and finally up to the surface where fishers and managers may adopt sustainable practices or continue the practices that have resulted in overfishing and by-catch.

Each species has a complex interaction with the environment, and if the imbalance of our give-and-take relationship with the ocean persists, we will continue to see new stresses that irreversibly change ocean conditions within the intertidal mudflats and into the yet unexplored ocean depths.

Source:

<https://www.ncbi.nlm.nih.gov/pmc/articles/PMC5051723/>

<http://www.jillpelto.com/gallery>



“There was a big decline in emissions from the most polluting industries, and that had immediate, short-term effects on temperatures”

-Drawing by Ankita Sarkar

-Drawing by Ankita Sarkar



"Smoke from cars is like cigarettes to the Earth..."

-Drawing by M.Ashtalakshmi



"Air pollution is the fourth largest threat for human beings, behind high blood pressure, dietary risks and smoking..."

-Drawing by Amrita Samal and Anjali Negi

Habitat Degradation:

Arctic Melt shows Arctic sea ice data from 1980 to present. Rapid warming in the Arctic has caused the sea ice area to decline so quickly that species cannot adjust. The Arctic fox is small and extraordinarily resilient to the most severe cold. They can withstand the frigid north and thus have this corner of the world in which to hunt. But when the temperatures mellow, competition from larger species could overcome them, as other species move further north to escape their own warming environment.

The artist painted the Arctic foxes to look cornered and skittish. One is hunched and defensive, the other is yowling in panic. The sea ice, from which they are separated, is spaced out by large expanses of dark blue water absorbing the sun's heat.

Reference:

<http://wxshift.com/climate-change/climate-indicators/arctic-sea-ice>

<http://www.jillpelto.com/gallery>

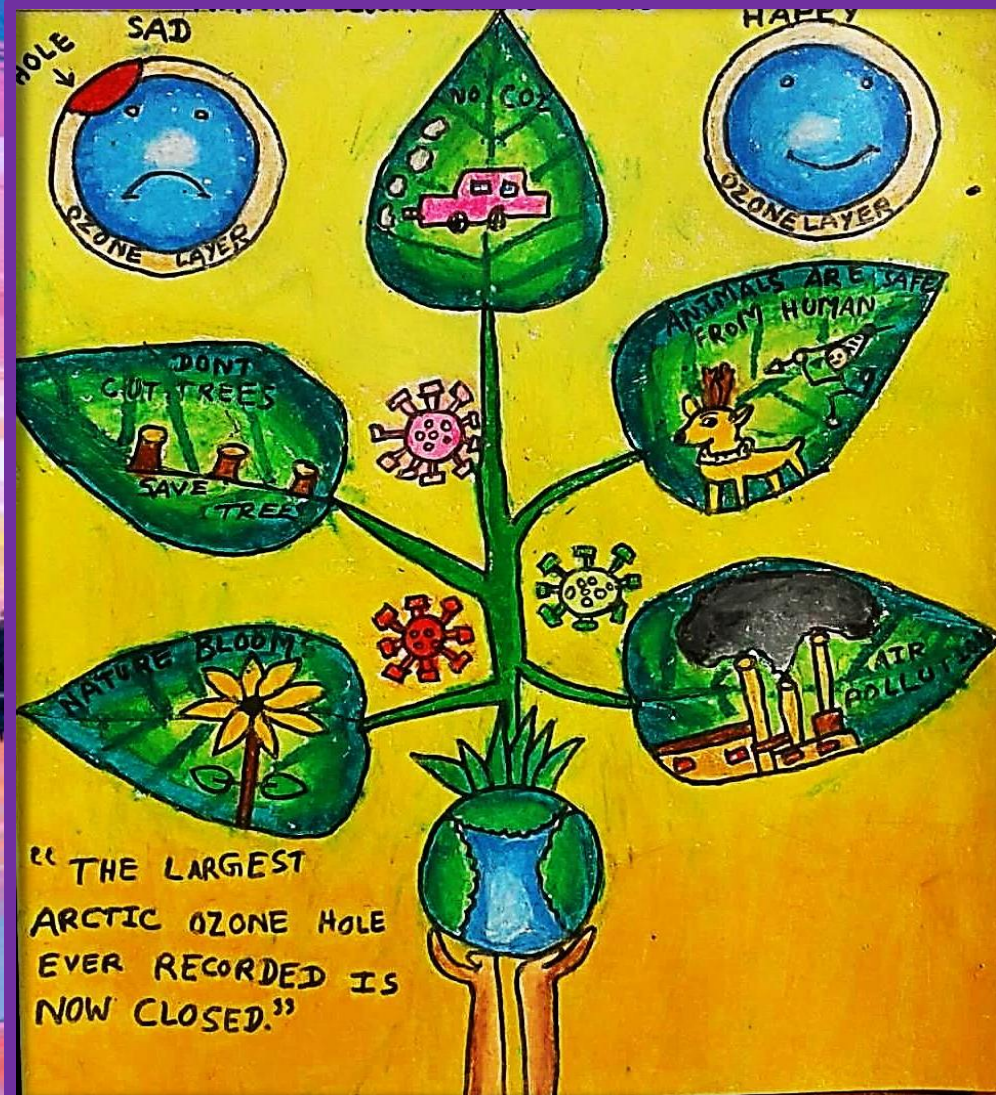




"The most important pathological effects of pollution are extremely delayed and indirect"
-Drawing by Roopanjana



M.KAMRAJU
B.Ed
UCE, OU
Hyderabad



"Covid-19 lockdowns led to significant changes in urban air pollution levels in global cities such as Delhi and London, but the changes were smaller than expected"

-Drawing by M.Kamraju and B.Manasha Sri



Atmospheric Pollution/Climate change (IMPACT)



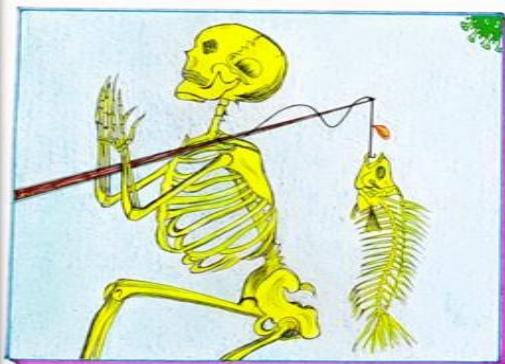
OUT OF STOCK



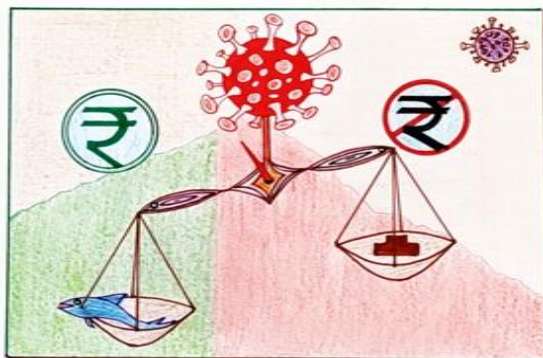
GLOBAL LOCKDOWN



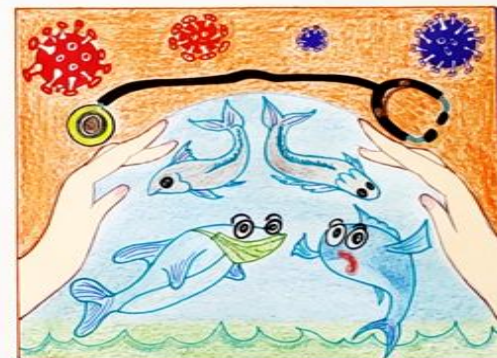
MALNUTRITION



• STARVATION



• ECONOMIC LOSSES



• STRESSED FISHES



HOPE & PRAY THIS CORONA VIRUS PANDEMIC ENDS SOON..

"Now our biggest environmental problems come from our own actions, our own choices, rather than pollution produced by big business"

-Drawing by Prem Chand Prasad



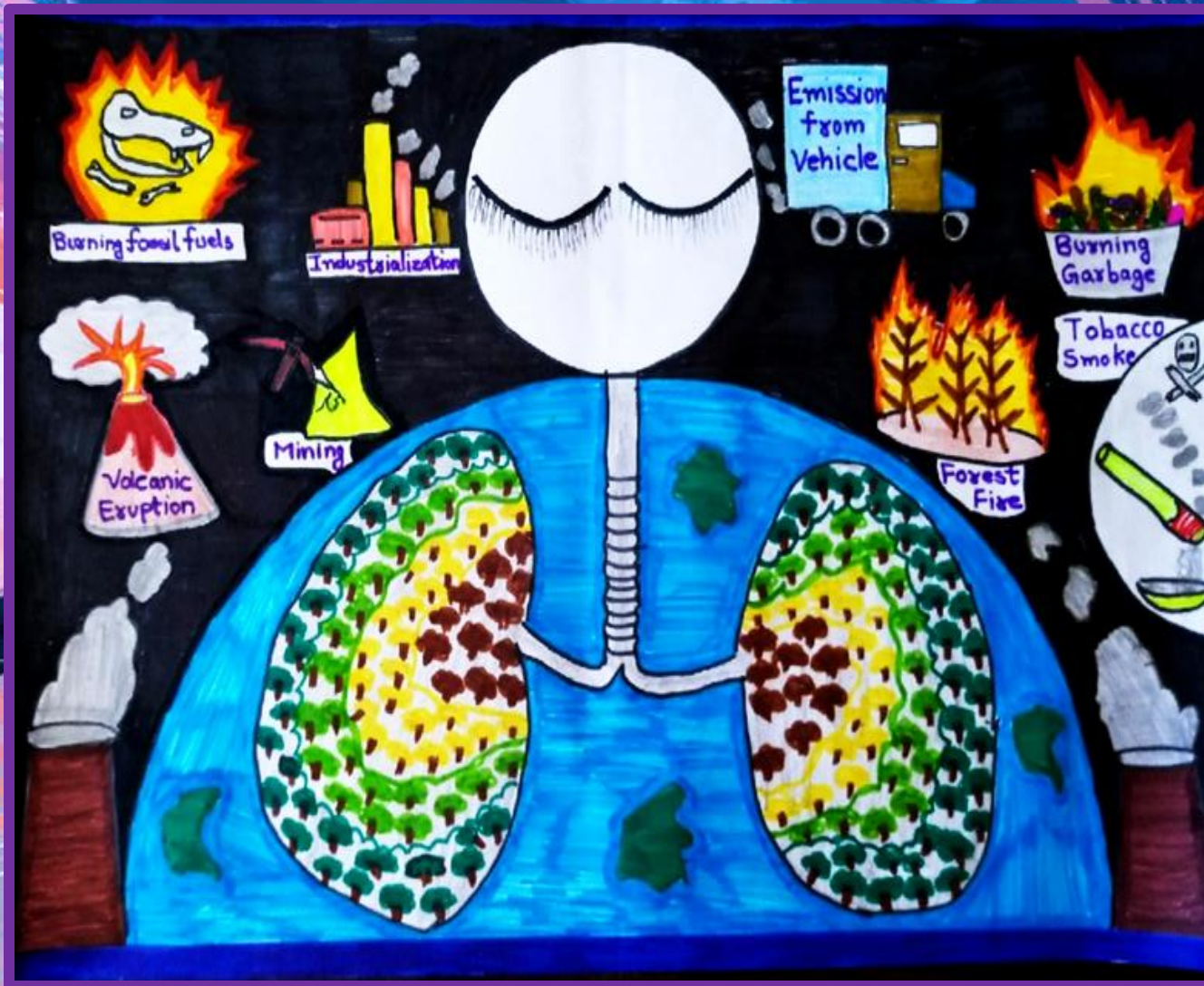
"Man is a complex being, he makes deserts bloom and lakes die..."

-Drawing by Vaishnavi Sonar

"Because normal human activity is worse for nature than the greatest nuclear accident in history."

-Drawing by Varshaja

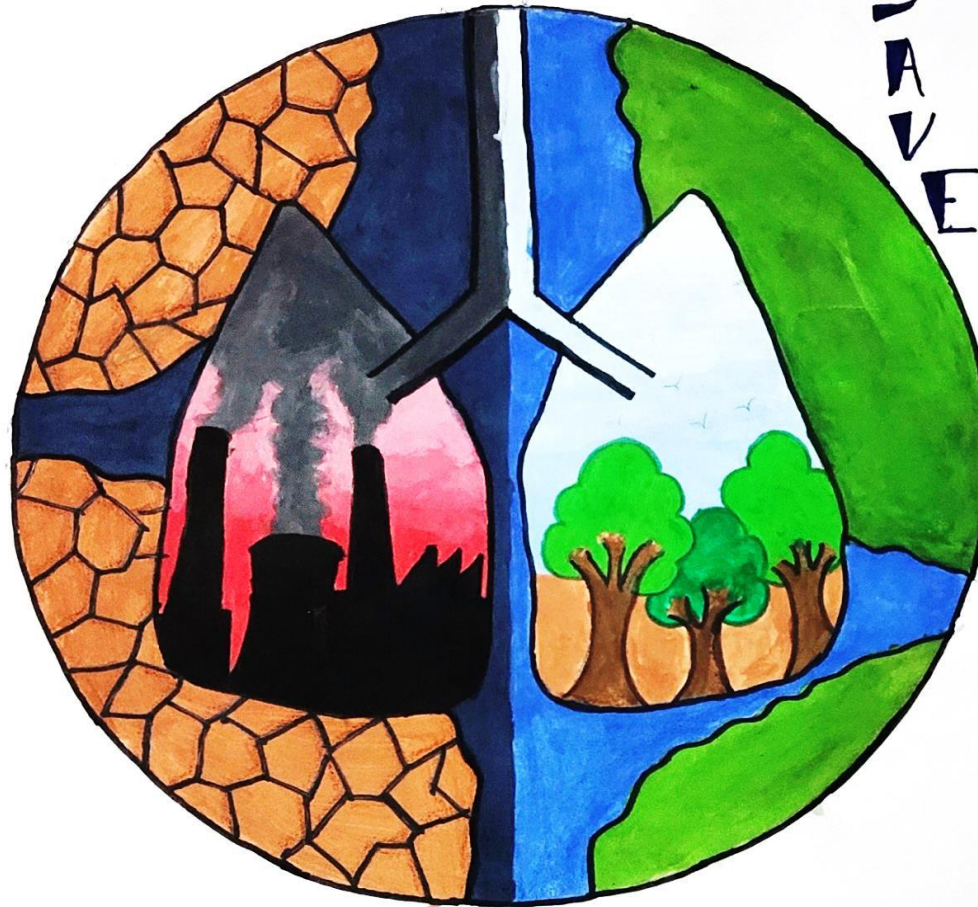




"There's so much pollution in the air now that if it weren't for our lungs there'd be no place to put it all"

-Drawing by Shwetakshi Mishra

STOP
POLLUTION



SAVE

ENVIRONMENT

"When the earth is sick and polluted, human health is impossible."

-Drawing by Shah Purva Shetalkumar



"Let's Push Towards Green To Keep The Planet Clean"

-Drawing by Vedashri Walimbe



Habitat Degradation:

Ocean Acidification contains ocean pH data from 1998 to 2012. The decreasing pH is due to atmospheric carbon dissolving into the ocean, and creating carbonic acid, which means a more acidic ocean.

This has harmful effects on all marine life. Studies on clownfish show that more acidic water alters how their brains' process information. This affects their ability to avoid predators by detecting noises and find their way home.

Ocean water has a lower pH than a fish's cells, so they take in carbonic acid in order to be in harmony with their environment. Even a small drop in pH requires fish to expend much more energy in order to equilibrate, and this energy is taken from other necessary functions. T

he clownfish in watercolor are grouped in confusion, separated from the anemone in which they live. The oceans may be vast, but if pH drops globally, there is literally nowhere marine life can go, they are confined to the water.

References:

<http://wxshift.com/climate-change/climate-indicators/ocean-acidification>

<http://ocean.si.edu/ocean-acidification>

<http://www.jillpelto.com/gallery>



"Air pollution can be the most significant cause of your lung destruction"

-Drawing by Krupali Mori

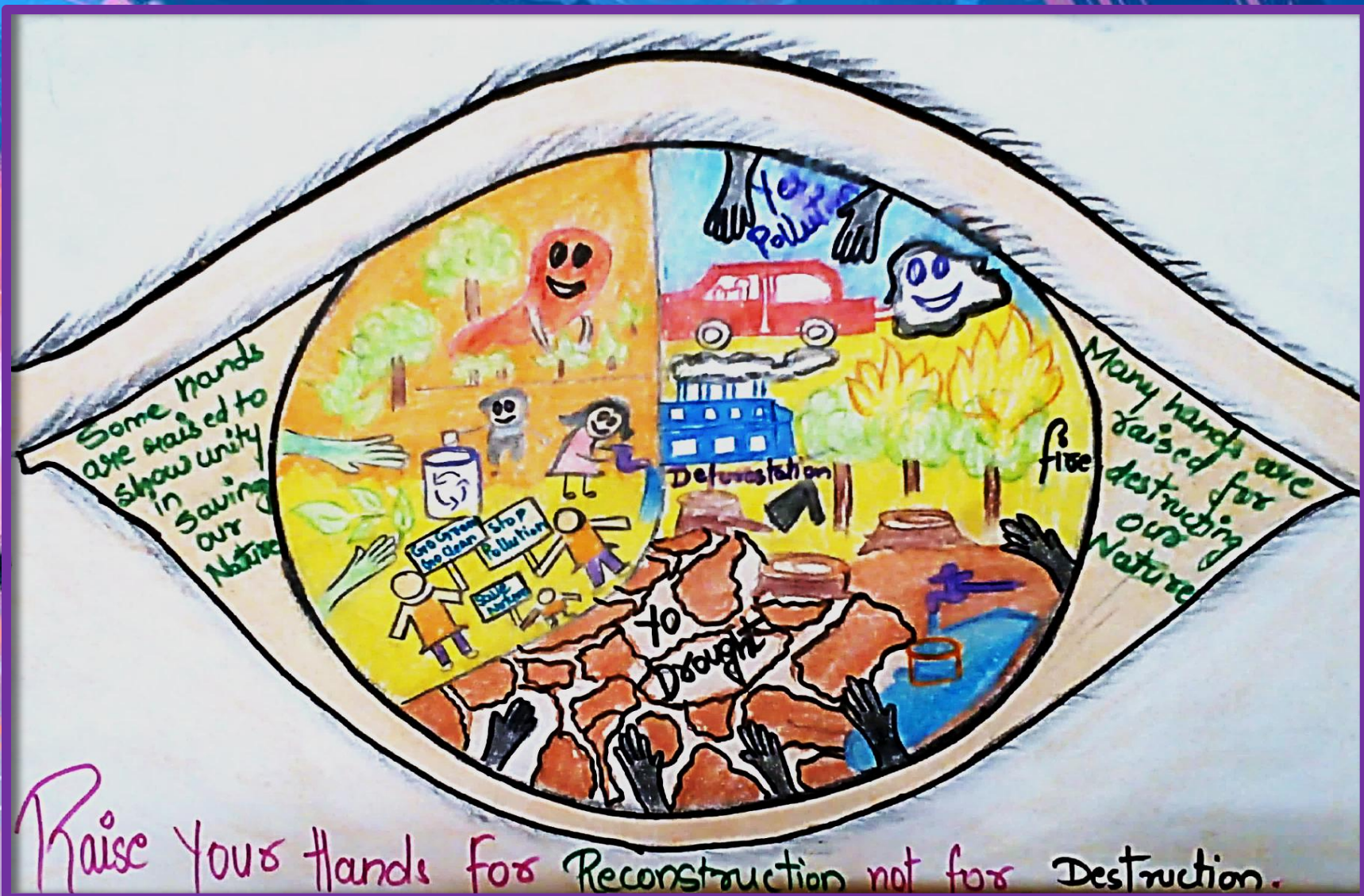


"The activist is not the man who says the river is dirty. The activist is the man who cleans up the river"
-Drawing by Drawing by Indrani Sah and Sonal Gupta



"Only we humans make waste that nature can't digest"

-Drawing by Patel Twinkle N



"Modern society will find no solution to the ecological problem unless it takes a serious look at its lifestyle"

-Drawing by Meghna Dak



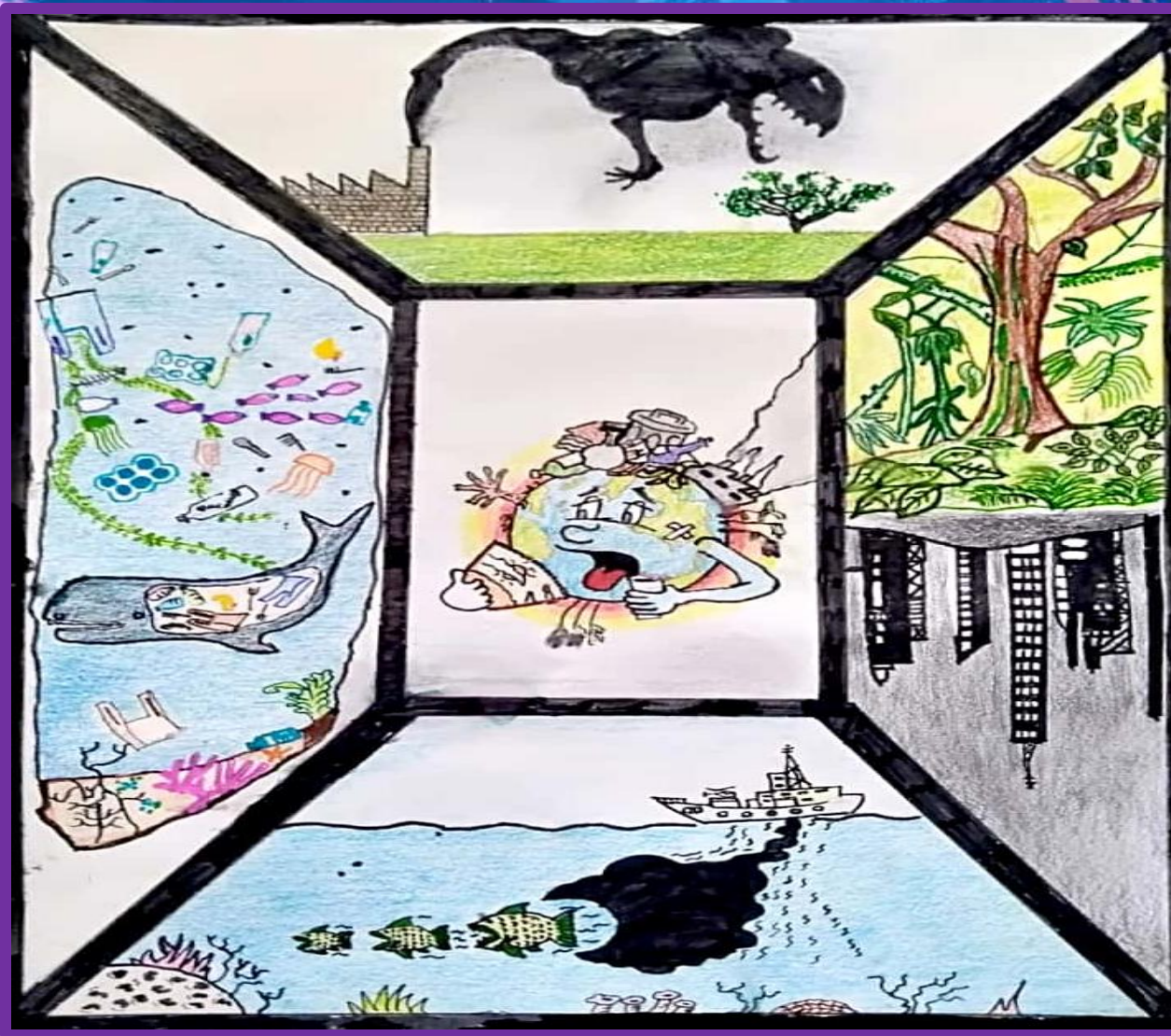
Habitat Degradation: Deforestation uses data showing the decline in rainforest area from 1970 to 2010. These lush ecosystems are disappearing before our eyes, and with them, millions of beautiful species. I'm quite certain that anyone would agree that a tiger is a magnificent creature, yet how many people realize that they are critically endangered?

For this series the artist chose to separate the animals from their habitat, because that is ultimately what we are doing. The tiger is trapped outside the forest, cornered. He is defensive and angry that we are sealing his fate.

Reference:

http://awsassets.wwf.es/downloads/2012_07_24_datasheet_tiger.pdf

<http://www.jillpelto.com/gallery>



"There is a sufficiency in the world for man's need but not for man's greed. For which we are exploiting our Environment "

-Drawing by Ayush Mahendra Kakade



“The single biggest threat to our planet is the destruction of habitat and along the way loss of precious wildlife “

-Drawing by Sridipta Manna



"More and more pollution & habitat destruction will eventually lead to more number of extreme weather events"

-Drawing by Shriya Jeet Shruti

The background is an abstract, textured composition of vibrant colors including red, orange, yellow, green, blue, and purple. A central, dark, textured figure, possibly a person's head and shoulders, is visible in the background, partially obscured by the yellow text box.

All queries and feedback regarding this art book should be addressed to:

ENVIS -Indian Institute of Tropical Meteorology,
Dr.Homi Bhabha Road, Pashan, Pune –411008, India

Phone: +91-20-2590-4212

Website: www.iitmenvis.nic.in | E-mail: iitm-env@nic.in