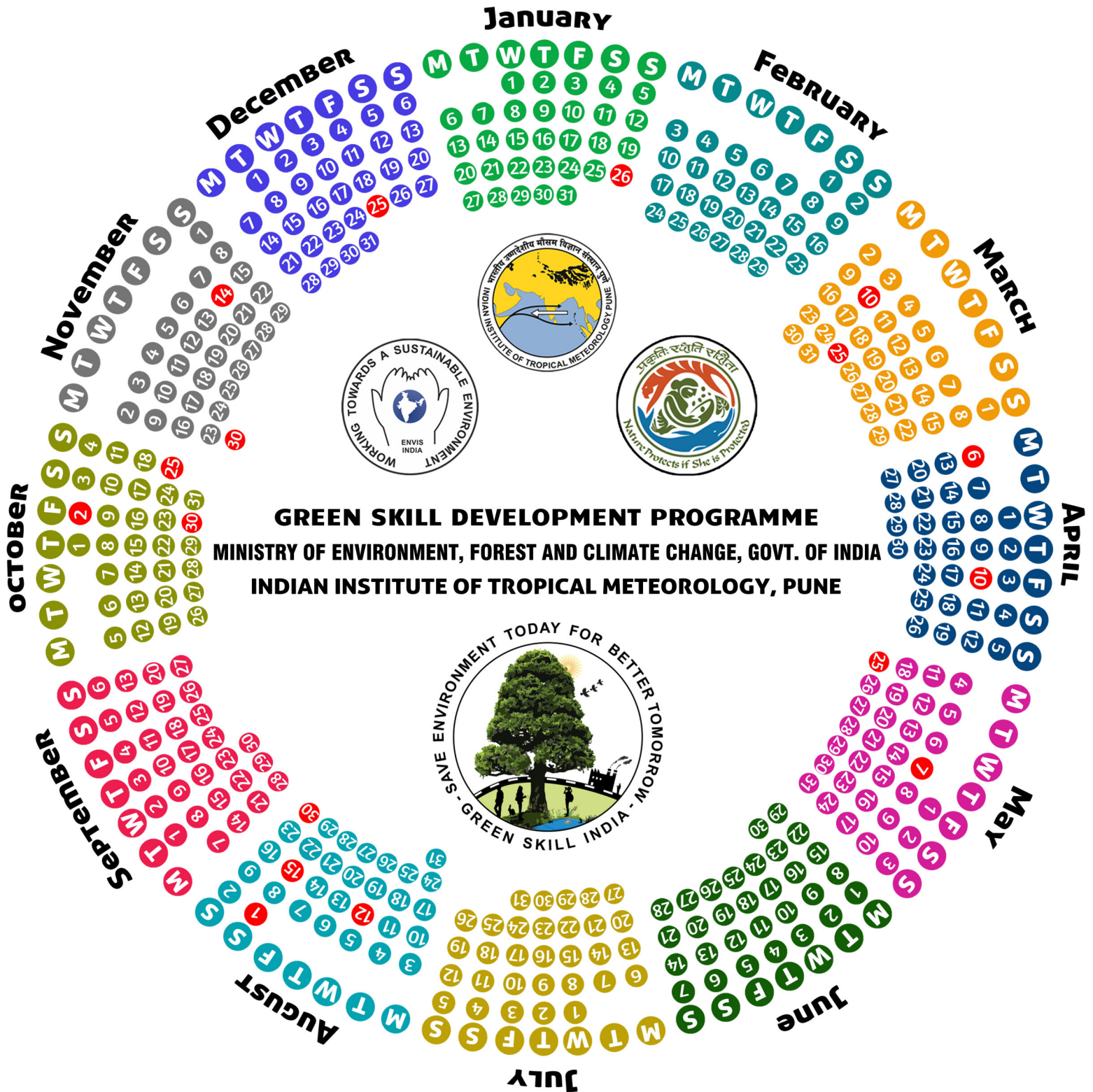


GSDP - Calendar 2020



GREEN SKILL DEVELOPMENT PROGRAMME
MINISTRY OF ENVIRONMENT, FOREST AND CLIMATE CHANGE, GOVT. OF INDIA
INDIAN INSTITUTE OF TROPICAL METEOROLOGY, PUNE



GREEN SKILL DEVELOPMENT PROGRAMME

MINISTRY OF ENVIRONMENT, FOREST AND CLIMATE CHANGE, GOVT. OF INDIA
INDIAN INSTITUTE OF TROPICAL METEOROLOGY, PUNE

India the skill capital of the world

'EMPOWERING YOUTH'

GREEN SKILL DEVELOPMENT PROGRAMME (GSDP)

'44 SUBJECT COURSES'

Skills in Environment, Forestry, Wildlife and Climate Change



January 2020

| Monday | Tuesday | Wednesday | Thursday | Friday | Saturday | Sunday |
|--------|---------|-----------|----------|--------|----------|--------|
| | | 1 | 2 | 3 | 4 | 5 |
| 6 | 7 | 8 | 9 | 10 | 11 | 12 |
| 13 | 14 | 15 | 16 | 17 | 18 | 19 |
| 20 | 21 | 22 | 23 | 24 | 25 | 26 |
| 27 | 28 | 29 | 30 | 31 | | |

IITM Holidays



26th
Republic Day

Green Days



14th Forest
Conservation
Day

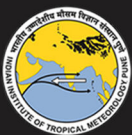


Will global warming affect coastal cities ?

Yes, sea levels have risen about 7 inches in the last 100 years, which is more than the previous 2000 years combined. The rising sea levels due to global warming could threaten the lives of people living along the coastal areas.

February

| Mon | Tue | Wed | Thu | Fri | Sat | Sun |
|-----|-----|-----|-----|-----|-----|-----|
| | | | | | 1 | 2 |
| 3 | 4 | 5 | 6 | 7 | 8 | 9 |
| 10 | 11 | 12 | 13 | 14 | 15 | 16 |
| 17 | 18 | 19 | 20 | 21 | 22 | 23 |
| 24 | 25 | 26 | 27 | 28 | 29 | |



GREEN SKILL DEVELOPMENT PROGRAMME

MINISTRY OF ENVIRONMENT, FOREST AND CLIMATE CHANGE, GOVT. OF INDIA

INDIAN INSTITUTE OF TROPICAL METEOROLOGY, PUNE



SAFAR-Air



18001801717



Display



Safar.tropmet.res.in



SAFAR - INDIA

Proud to be India's First Air Quality Early Warning System.

Celebrating a decade of service to nation in air quality and weather in 4 Metropolitan cities Delhi, Pune, Mumbai and Ahmedabad

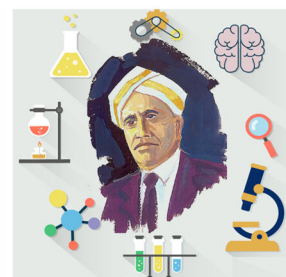


METRO AIR QUALITY INFORMATION & ADVISORY SERVICE



FEBRUARY 2020

| Monday | Tuesday | Wednesday | Thursday | Friday | Saturday | Sunday |
|--------|---------|-----------|----------|--------|----------|--------|
| | | | | | 1 | 2 |
| 3 | 4 | 5 | 6 | 7 | 8 | 9 |
| 10 | 11 | 12 | 13 | 14 | 15 | 16 |
| 17 | 18 | 19 | 20 | 21 | 22 | 23 |
| 24 | 25 | 26 | 27 | 28 | 29 | |



Green Days



2nd World Wetlands Day



28th National Science Day



Does wildlife getting affected due to Climate change?

Yes, alongwith climate change factors like land degradation and habitat loss, is emerging as a top threat to wildlife around the globe, the report suggest.

Mon Tue Wed Thu Fri Sat Sun

March

| | | | | | | |
|----|----|----|----|----|----|----|
| | | | | | | 1 |
| 2 | 3 | 4 | 5 | 6 | 7 | 8 |
| 9 | 10 | 11 | 12 | 13 | 14 | 15 |
| 16 | 17 | 18 | 19 | 20 | 21 | 22 |
| 23 | 24 | 25 | 26 | 27 | 28 | 29 |
| 30 | 31 | | | | | |



GREEN SKILL DEVELOPMENT PROGRAMME

MINISTRY OF ENVIRONMENT, FOREST AND CLIMATE CHANGE, GOVT. OF INDIA

INDIAN INSTITUTE OF TROPICAL METEOROLOGY, PUNE

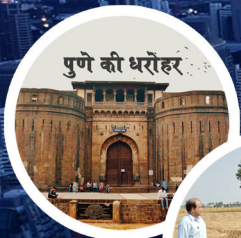
Come & Join us

Listen to "who is who" in Air Quality

INTERNATIONAL CONFERENCE ON Challenges Of Air Quality in Global Megacities (CAGMe-2020)

24-27 March, 2020
PUNE, INDIA

<http://safar.tropmet.res.in/aphh/>



MARCH 2020

| Monday | Tuesday | Wednesday | Thursday | Friday | Saturday | Sunday |
|--------|---------|-----------|----------|--------|----------|--------|
| 30 | 31 | | | | | 1 |
| 2 | 3 | 4 | 5 | 6 | 7 | 8 |
| 9 | 10 | 11 | 12 | 13 | 14 | 15 |
| 16 | 17 | 18 | 19 | 20 | 21 | 22 |
| 23 | 24 | 25 | 26 | 27 | 28 | 29 |

IITM Holidays



10th Holi



25th Gudi Padwa

Green Days



21st World
Forestry Day



23rd World
Meteorological Day



Is alteration in land use pattern will cause global warming ?

Yes, deforestation, the destruction of wetlands and other forms of land conversion can release massive amounts of carbon into the atmosphere, which may worsen global warming.

Mon Tue Wed Thu Fri Sat Sun

April

| | | | | | | |
|----|----|----|----|----|----|----|
| | | 1 | 2 | 3 | 4 | 5 |
| 6 | 7 | 8 | 9 | 10 | 11 | 12 |
| 13 | 14 | 15 | 16 | 17 | 18 | 19 |
| 20 | 21 | 22 | 23 | 24 | 25 | 26 |
| 27 | 28 | 29 | 30 | | | |

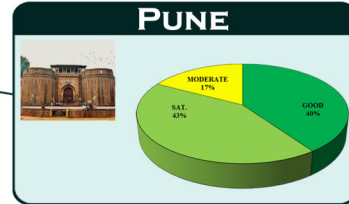
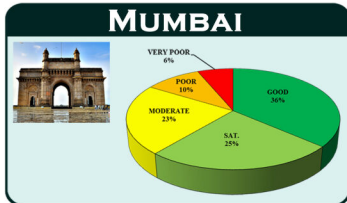
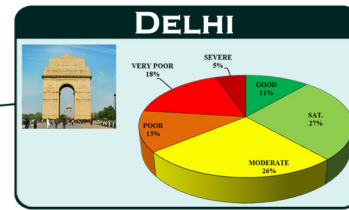
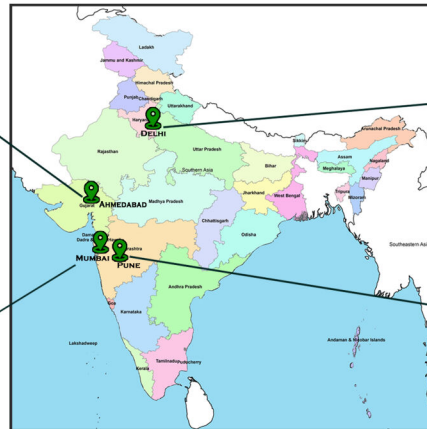
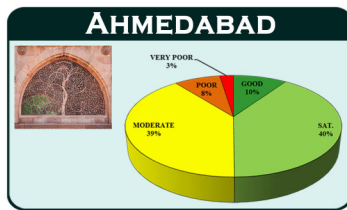


GREEN SKILL DEVELOPMENT PROGRAMME

MINISTRY OF ENVIRONMENT, FOREST AND CLIMATE CHANGE, GOVT. OF INDIA

INDIAN INSTITUTE OF TROPICAL METEOROLOGY, PUNE

AIR QUALITY STATUS-2019 IN 4 SAFAR CITIES



% NUMBER OF DAYS IN DIFFERENT AQI CATEGORIES IN 2019

APRIL 2020

| Monday | Tuesday | Wednesday | Thursday | Friday | Saturday | Sunday |
|--------|---------|-----------|----------|--------|----------|--------|
| | | 1 | 2 | 3 | 4 | 5 |
| 6 | 7 | 8 | 9 | 10 | 11 | 12 |
| 13 | 14 | 15 | 16 | 17 | 18 | 19 |
| 20 | 21 | 22 | 23 | 24 | 25 | 26 |
| 27 | 28 | 29 | 30 | | | |

IITM Holidays



6th
Mahavir Jayanti



10th Good Friday

Green Days



22nd Earth Day

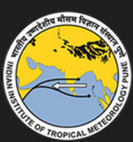
Q How excess Carbon Dioxide in atmosphere has affected oceans ?

Since the beginning of the Industrial Revolution, the acidity of surface ocean waters has increased by about 30%. This increase is the result of humans emitting more carbon dioxide into the atmosphere and hence more being absorbed into the oceans. The amount of carbon dioxide absorbed by the upper layer of the oceans is increasing by about 2 billion tons per year.

May

Mon Tue Wed Thu Fri Sat Sun

| | | | | | | | |
|----|----|----|----|----|----|----|---|
| | | | | | 1 | 2 | 3 |
| 4 | 5 | 6 | 7 | 8 | 9 | 10 | |
| 11 | 12 | 13 | 14 | 15 | 16 | 17 | |
| 18 | 19 | 20 | 21 | 22 | 23 | 24 | |
| 25 | 26 | 27 | 28 | 29 | 30 | 31 | |



GREEN SKILL DEVELOPMENT PROGRAMME

MINISTRY OF ENVIRONMENT, FOREST AND CLIMATE CHANGE, GOVT. OF INDIA

INDIAN INSTITUTE OF TROPICAL METEOROLOGY, PUNE



AHMEDABAD; 180 SCHOOLS, 70,000 STUDENTS
PUNE; 350 SCHOOLS, 1.4 LAKH STUDENTS

SAFAR-towards Awareness

Environment Awareness
- Touching Young Minds

SAFAR- School Flag
Awareness Program
on Air Quality



May 2020

| Monday | Tuesday | Wednesday | Thursday | Friday | Saturday | Sunday |
|--------|---------|-----------|----------|--------|----------|--------|
| | | | | 1 | 2 | 3 |
| 4 | 5 | 6 | 7 | 8 | 9 | 10 |
| 11 | 12 | 13 | 14 | 15 | 16 | 17 |
| 18 | 19 | 20 | 21 | 22 | 23 | 24 |
| 25 | 26 | 27 | 28 | 29 | 30 | 31 |

IITM Holidays



7th
Buddha Purnima



25th Id-ul-Fitr

Green Days



1st SAFAR-Pune
Dedicated to Nation



How population growth and climate change are related ?

Population and climate change are directly linked. Every additional person increases carbon emissions — the rich more than the poor — and increases the number of climate change victims – the poor more than the rich.

Mon Tue Wed Thu Fri Sat Sun

June

| | | | | | | |
|----|----|----|----|----|----|----|
| 1 | 2 | 3 | 4 | 5 | 6 | 7 |
| 8 | 9 | 10 | 11 | 12 | 13 | 14 |
| 15 | 16 | 17 | 18 | 19 | 20 | 21 |
| 22 | 23 | 24 | 25 | 26 | 27 | 28 |
| 29 | 30 | | | | | |



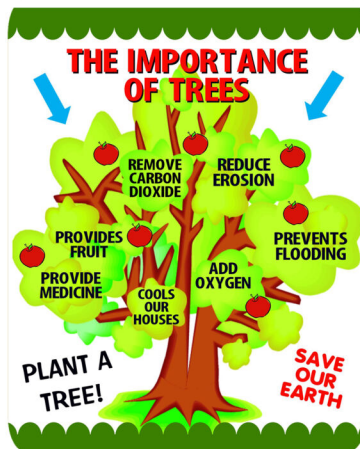
GREEN SKILL DEVELOPMENT PROGRAMME

MINISTRY OF ENVIRONMENT, FOREST AND CLIMATE CHANGE, GOVT. OF INDIA

INDIAN INSTITUTE OF TROPICAL METEOROLOGY, PUNE



Dr. Beig (SAFAR) with Director, UNEP and Director, IIIM



WORLD ENVIRONMENT DAY

Who plants "A TREE"
Plants "A HOPE"



June 2020

| Monday | Tuesday | Wednesday | Thursday | Friday | Saturday | Sunday |
|--------|---------|-----------|----------|--------|----------|--------|
| 1 | 2 | 3 | 4 | 5 | 6 | 7 |
| 8 | 9 | 10 | 11 | 12 | 13 | 14 |
| 15 | 16 | 17 | 18 | 19 | 20 | 21 |
| 22 | 23 | 24 | 25 | 26 | 27 | 28 |
| 29 | 30 | | | | | |

Green Days



5th World Environment Day



15th Global Wind Day



17th World Day to combat Desertification & Drought



How climate change will affect the availability of food ?

Climate change can disrupt food availability & affect food quality. For example, projected increases in temperatures, changes in precipitation patterns, changes in extreme weather events, and reductions in water availability may all result in reduced agricultural productivity.

July

Mon Tue Wed Thu Fri Sat Sun

| | | | | | | | |
|----|----|----|----|----|----|----|---|
| | | | 1 | 2 | 3 | 4 | 5 |
| 6 | 7 | 8 | 9 | 10 | 11 | 12 | |
| 13 | 14 | 15 | 16 | 17 | 18 | 19 | |
| 20 | 21 | 22 | 23 | 24 | 25 | 26 | |
| 27 | 28 | 29 | 30 | 31 | | | |



GREEN SKILL DEVELOPMENT PROGRAMME

MINISTRY OF ENVIRONMENT, FOREST AND CLIMATE CHANGE, GOVT. OF INDIA

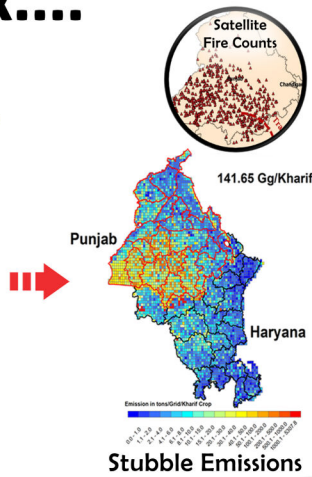
INDIAN INSTITUTE OF TROPICAL METEOROLOGY, PUNE

SAFAR-Making a Mark....

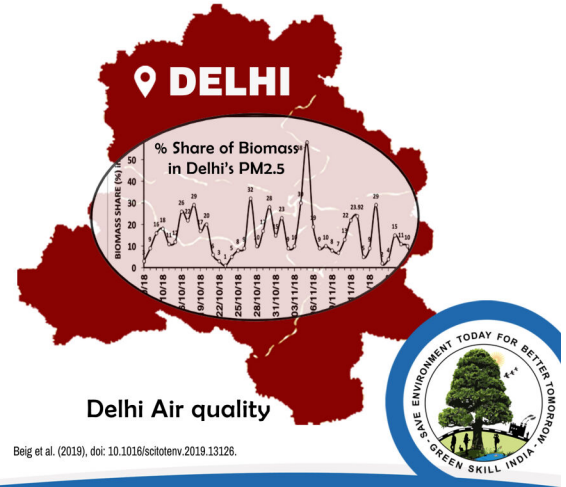
"1st footprints of % fire Share in Delhi's Air"



Stubble Fire Burning



Stubble Emissions



JULY 2020

| Monday | Tuesday | Wednesday | Thursday | Friday | Saturday | Sunday |
|--------|---------|-----------|----------|--------|----------|--------|
| | | 1 | 2 | 3 | 4 | 5 |
| 6 | 7 | 8 | 9 | 10 | 11 | 12 |
| 13 | 14 | 15 | 16 | 17 | 18 | 19 |
| 20 | 21 | 22 | 23 | 24 | 25 | 26 |
| 27 | 28 | 29 | 30 | 31 | | |



Green Days



28th World
Nature conservation
day



29th International
Tiger day



How does climate change affect water supply ?

Warmer temperatures increase the rate of evaporation of water into the atmosphere, in effect increasing the atmosphere's capacity to "hold" water. Increased evaporation may dry out some areas and fall as excess precipitation on other areas.

August

| Mon | Tue | Wed | Thu | Fri | Sat | Sun |
|-----|-----|-----|-----|-----|-----|-----|
| 31 | | | | | 1 | 2 |
| 3 | 4 | 5 | 6 | 7 | 8 | 9 |
| 10 | 11 | 12 | 13 | 14 | 15 | 16 |
| 17 | 18 | 19 | 20 | 21 | 22 | 23 |
| 24 | 25 | 26 | 27 | 28 | 29 | 30 |



GREEN SKILL DEVELOPMENT PROGRAMME

MINISTRY OF ENVIRONMENT, FOREST AND CLIMATE CHANGE, GOVT. OF INDIA

INDIAN INSTITUTE OF TROPICAL METEOROLOGY, PUNE



2nd batch of Green Skill Development Program on "Emission Inventory"
With Mr. Yashvir Singh, ENVIS-In-charge, MoEF&CC

IITM Skilling Youth

via **GSDP**

- For Better Tomorrow



AUGUST 2020

| Monday | Tuesday | Wednesday | Thursday | Friday | Saturday | Sunday |
|--------|---------|-----------|----------|--------|----------|--------|
| 31 | | | | | 1 | 2 |
| 3 | 4 | 5 | 6 | 7 | 8 | 9 |
| 10 | 11 | 12 | 13 | 14 | 15 | 16 |
| 17 | 18 | 19 | 20 | 21 | 22 | 23 |
| 24 | 25 | 26 | 27 | 28 | 29 | 30 |

IITM Holidays



1st Id-ul-Zuha (Bakrid)



12th Janmashtami



15th Independence day



30th Muharram

Green Days



10th International Biodiesel Day



20th Akshay Urja Diwas



Is depletion of the ozone layer the principal cause of global climate change ?

No, ozone depletion is not the principal cause of global climate change. Ozone depletion and global climate change are linked because both ozone-depleting substances and their substitutes are greenhouse gases.

September

Mon Tue Wed Thu Fri Sat Sun

| | | | | | | |
|----|----|----|----|----|----|----|
| | 1 | 2 | 3 | 4 | 5 | 6 |
| 7 | 8 | 9 | 10 | 11 | 12 | 13 |
| 14 | 15 | 16 | 17 | 18 | 19 | 20 |
| 21 | 22 | 23 | 24 | 25 | 26 | 27 |
| 28 | 29 | 30 | | | | |

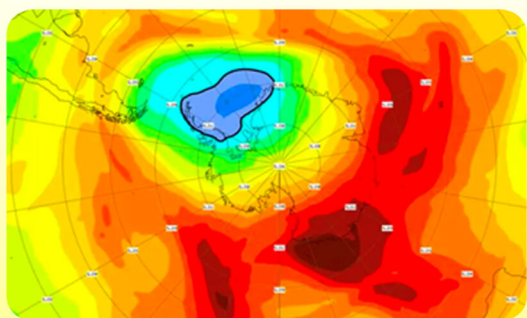


GREEN SKILL DEVELOPMENT PROGRAMME

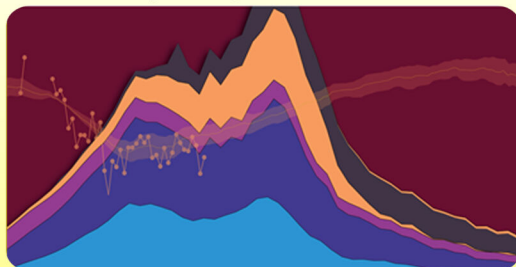
MINISTRY OF ENVIRONMENT, FOREST AND CLIMATE CHANGE, GOVT. OF INDIA

INDIAN INSTITUTE OF TROPICAL METEOROLOGY, PUNE

2019 ozone hole is the smallest on record



Declining trends in
ozone-depleting substances (ODSs)



World³Ozone Day



International Day for the Preservation of the Ozone Layer

SEPTEMBER 2020

| Monday | Tuesday | Wednesday | Thursday | Friday | Saturday | Sunday |
|--------|---------|-----------|----------|--------|----------|--------|
| | 1 | 2 | 3 | 4 | 5 | 6 |
| 7 | 8 | 9 | 10 | 11 | 12 | 13 |
| 14 | 15 | 16 | 17 | 18 | 19 | 20 |
| 21 | 22 | 23 | 24 | 25 | 26 | 27 |
| 28 | 29 | 30 | | | | |

Green Days



16th World
Ozone Day



18th International
Coastal Clean
Up Day



27th World
Rivers Day



What causes atmospheric pollution ?

Atmospheric pollution is caused by solid and liquid particles and certain gases that are suspended in the air. These particles and gases can come from car and truck exhaust, factories, dust, pollen, mold spores, volcanoes and wildfires.

October

Mon Tue Wed Thu Fri Sat Sun

| | | | | | | |
|----|----|----|----|----|----|----|
| | | | 1 | 2 | 3 | 4 |
| 5 | 6 | 7 | 8 | 9 | 10 | 11 |
| 12 | 13 | 14 | 15 | 16 | 17 | 18 |
| 19 | 20 | 21 | 22 | 23 | 24 | 25 |
| 26 | 27 | 28 | 29 | 30 | 31 | |





GREEN SKILL DEVELOPMENT PROGRAMME

MINISTRY OF ENVIRONMENT, FOREST AND CLIMATE CHANGE, GOVT. OF INDIA

INDIAN INSTITUTE OF TROPICAL METEOROLOGY, PUNE

स्वच्छ भारत समृद्ध भारत



Campus Cleaning Service by IITM Scientists



SAFAR (System of Air Quality and Weather Forecasting and Research) - A Name You can Trust.....



OCTOBER 2020

| Monday | Tuesday | Wednesday | Thursday | Friday | Saturday | Sunday |
|--------|---------|-----------|----------|--------|----------|--------|
| | | | 1 | 2 | 3 | 4 |
| 5 | 6 | 7 | 8 | 9 | 10 | 11 |
| 12 | 13 | 14 | 15 | 16 | 17 | 18 |
| 19 | 20 | 21 | 22 | 23 | 24 | 25 |
| 26 | 27 | 28 | 29 | 30 | 31 | |

IITM Holidays



2nd Mahatma
Gandhi's Birthday



25th Dussehra



30th Id-e-Milad

Green Days



24th International Day
of Climate Action



What is weather ?

Weather is the state of the atmosphere, describing for example the degree to which it is hot or cold, wet or dry, calm or stormy, clear or cloudy.

November

| Mon | Tue | Wed | Thu | Fri | Sat | Sun |
|-----|-----|-----|-----|-----|-----|-----|
| 30 | | | | | | 1 |
| 2 | 3 | 4 | 5 | 6 | 7 | 8 |
| 9 | 10 | 11 | 12 | 13 | 14 | 15 |
| 16 | 17 | 18 | 19 | 20 | 21 | 22 |
| 23 | 24 | 25 | 26 | 27 | 28 | 29 |



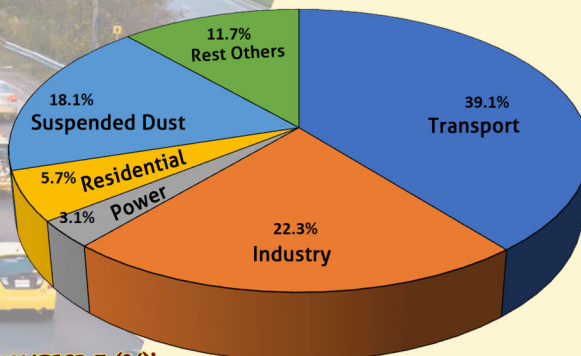
GREEN SKILL DEVELOPMENT PROGRAMME

MINISTRY OF ENVIRONMENT, FOREST AND CLIMATE CHANGE, GOVT. OF INDIA

INDIAN INSTITUTE OF TROPICAL METEOROLOGY, PUNE

SAFAR-Towards Pollution Controls.....

SAFAR-DELHI EMISSION INVENTORY-2019



MAJOR SOURCES OF EMISSION IN 'PM2.5 (%)'



November 2020

| Monday | Tuesday | Wednesday | Thursday | Friday | Saturday | Sunday |
|--------|---------|-----------|----------|--------|----------|--------|
| 30 | | | | | | 1 |
| 2 | 3 | 4 | 5 | 6 | 7 | 8 |
| 9 | 10 | 11 | 12 | 13 | 14 | 15 |
| 16 | 17 | 18 | 19 | 20 | 21 | 22 |
| 23 | 24 | 25 | 26 | 27 | 28 | 29 |

IITM Holidays



14th Diwali



30th Guru Nanak's Birthday

Green Days



11th National Education Day



19th International GIS day



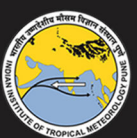
Why should we protect our forests ?

We depend on forests for our survival, from the air we breathe to the wood we use. Besides providing habitats for animals and livelihoods for humans, forests also offer watershed protection, prevent soil erosion and mitigate climate change.

December

Mon Tue Wed Thu Fri Sat Sun

| | | | | | | |
|----|----|----|----|----|----|----|
| | 1 | 2 | 3 | 4 | 5 | 6 |
| 7 | 8 | 9 | 10 | 11 | 12 | 13 |
| 14 | 15 | 16 | 17 | 18 | 19 | 20 |
| 21 | 22 | 23 | 24 | 25 | 26 | 27 |
| 28 | 29 | 30 | 31 | | | |



GREEN SKILL DEVELOPMENT PROGRAMME

MINISTRY OF ENVIRONMENT, FOREST AND CLIMATE CHANGE, GOVT. OF INDIA

INDIAN INSTITUTE OF TROPICAL METEOROLOGY, PUNE



Premises of INDIAN INSTITUTE OF TROPICAL METEOROLOGY

PRIDE OF INDIA: SAFAR

-India's First Air Quality Forecasting System



"SAFAR" conceived, designed and developed here



December 2020

| Monday | Tuesday | Wednesday | Thursday | Friday | Saturday | Sunday |
|--------|---------|-----------|----------|--------|----------|--------|
| | 1 | 2 | 3 | 4 | 5 | 6 |
| 7 | 8 | 9 | 10 | 11 | 12 | 13 |
| 14 | 15 | 16 | 17 | 18 | 19 | 20 |
| 21 | 22 | 23 | 24 | 25 | 26 | 27 |
| 28 | 29 | 30 | 31 | | | |

IITM Holidays



25th Christmas Day

Green Days



2nd

National Pollution control day



14th

National Energy Conservation day



How does haze affect the environment ?

Haze is one of the most basic forms of air pollution and degrades visibility in many American cities and scenic areas. It is caused when sunlight encounters pollution particles in the air, which reduce the clarity and color of what we see.

January

Mon Tue Wed Thu Fri Sat Sun

| | | | | | | |
|----|----|----|----|----|----|----|
| | | | | 1 | 2 | 3 |
| 4 | 5 | 6 | 7 | 8 | 9 | 10 |
| 11 | 12 | 13 | 14 | 15 | 16 | 17 |
| 18 | 19 | 20 | 21 | 22 | 23 | 24 |
| 25 | 26 | 27 | 28 | 29 | 30 | 31 |